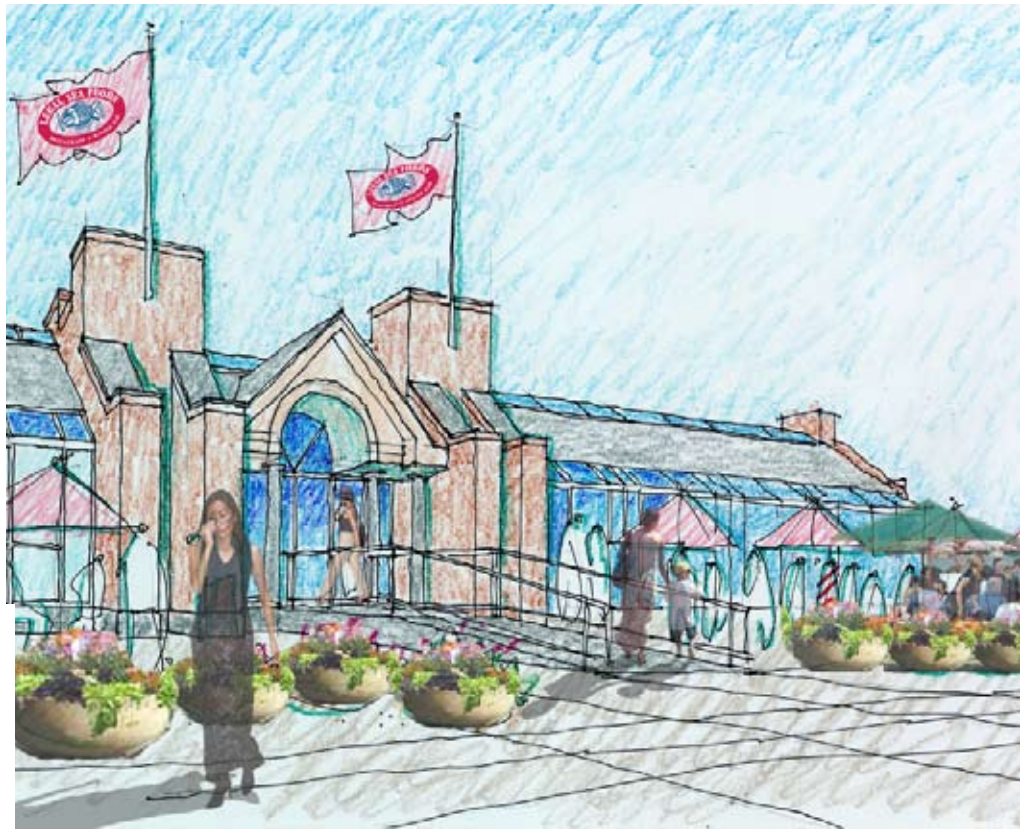
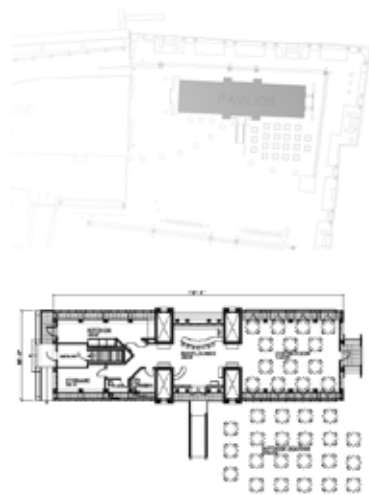


Long Wharf Pavilion

Boston, MA



HMFH worked with the Boston Redevelopment Authority to design improvements to an open-air pavilion at the tip of Boston's Long Wharf. Originally designed to mask an exhaust shaft and emergency egress for the Blue Line subway running beneath the harbor, the city hopes to attach a restaurant operation to this important location.

HMFH's design transformed the little-used and frequently vandalized structure into a welcoming public amenity that would better fit its waterfront location. As part of the core and shell improvements, HMFH designed an operable glass enclosure to accommodate a retail restaurant use.

Subsequent to developing the initial design and development RFP, HMFH worked with Legal Sea Foods on its proposal for a waterfront restaurant that would help fuel the continued growth of Boston's harbor front as recreational and entertainment destination.