



Awards

2003 First Prize, Solar Electric Category
Northeast Green Building Awards

2003 Merit Award
Build Massachusetts Collaboration Awards

2002 Preservation Achievement Award
Boston Preservation Alliance

2002 Citation
School Construction News & Design Share, Inc.

HMFH Architects, Inc.
130 Bishop Allen Drive
Cambridge, MA 02139
t 617 492 2200
f 617 876 9775
www.hmfh.com

HMFH worked closely with the Media and Technology Charter High School to create appropriate space for its innovative educational program. Intended to serve a self-selected group of high school students from Boston, the MATCH School mission is to use media and technology not for vocational education, but to facilitate instruction of the basics and actively engage college-bound students in their education.

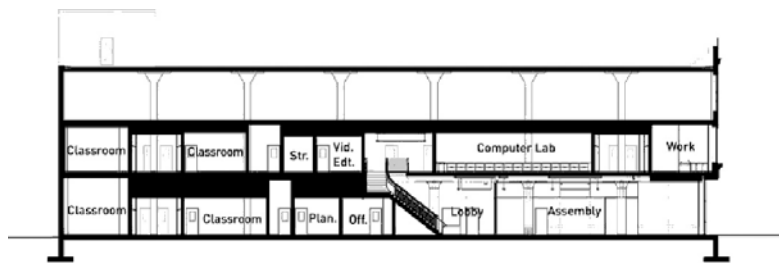
The school occupies a 20th Century landmark along Commonwealth Avenue's former "automile." Known as the Ellis-the-Rim-Man building, the three-story structure was built in 1917 as a showroom for the Lincoln Motorcar Company. Decorative columns and a grand marble stair with iron grillwork were restored and incorporated into the school-wide assembly space. This multi-purpose space, with views of Commonwealth Avenue, can be darkened for performances and also serves as a dining area and study space.

In addition to the large assembly space, the MATCH School has nine general classrooms, a computer lab, a media center, and small break-out spaces to accommodate the school's morning advisory sessions.





Third Floor Plan



Section

